



Anti-PLCG2 Antibody

Alternative Names: 1-phosphatidylinositol 4,5-bisphosphate phosphodiesterase gamma-2, Phospholipase C-IV, PLC-IV, Phospholipase C-gamma-2, PLC-gamma-2

Catalogue Number: AB21-10139-100ug

Size: 100 µg

Background Information

Phospholipase C-gamma2 (PLCG2) PLCG2 is an enzyme mainly expressed in immune cells (including microglia) which are involved in innate immunity. It is involved in the transmembrane transduction of immune signals that determine the fate and function of various immune cell types.

PLCG2 has higher expression levels in pathologically affected brain regions in Alzheimer's disease indicating that the immune system may play a key role in the development of Alzheimer's disease and a polymorphism in phospholipase C-gamma 2 (PLCG2) has been reported to be protective against late onset Alzheimer's disease (LOAD) [1].

Product Information

Antibody Type:	Polyclonal Antibody	Host:	Rabbit
Isotype:	IgG	Species Reactivity:	Human, Mouse, Rat
Immunogen:	Partial length recombinant human PLCG2 from the N-terminal region		
Format:	100 µg in 100 µl Buffer: PBS with 0.03% Proclin300, 50% glycerol, pH7.3.		
Storage Conditions:	Store at -20°C. Avoid freeze / thaw cycles.		
Applications:	WB 1:500-2000. IHC 1:50-200. IF 1:20-100.		

Additional Information

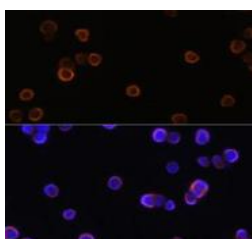
Subcellular location:	Secreted/Extracellular region, Plasma Membrane	MW:	148kDa (Intended as a general guide and does not allow for all isoforms and species variations)
Gene ID	5336	Uniprot ID:	P16885

References

[1] Sims R, van der Lee SJ, Naj AC, Bellenguez C, Badarinarayan N, Jakobsdottir J et al (2017) Rare coding variants in PLCG2, ABI3, and TREM2 implicate microglial-mediated innate immunity in Alzheimer's disease. Nat Genet 49:1373–1384.

Images

IF of PLCG2 expressed in Raw 264.7 cells
PLCG2: Cat No: AB21-10139
Antibody dilution: 1:100



IHC of FFPE Mouse Heart
PLCG2: Cat No: AB21-10139
Antibody dilution: 1:100

