

NSR Prestained Protein Ladder

Catalogue Number: MG20-10101

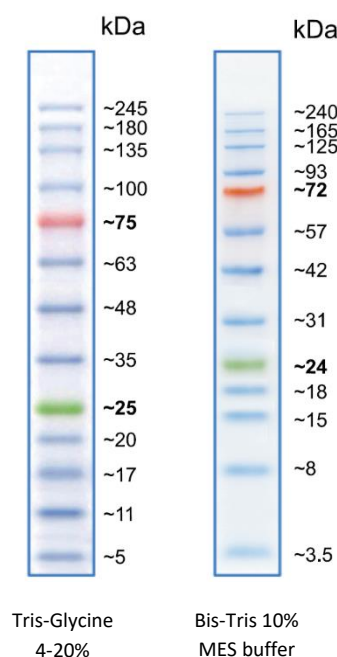
Size: 500µl

Background Information

The NSR Prestained Protein Ladder is a three colour protein standard with 13 prestained proteins covering molecular weights from 3.5 to 245 kilodaltons. It has been designed for use in most general applications for a protein ladder with a broad range of protein sizes, key reference bands and excellent Western transfer efficiency (tested with PVDF, nylon and nitrocellulose membranes).

Most of the proteins are covalently coupled with a blue chromophore apart from two reference bands, one stained red at 75 kDa and one stained green at 25 kDa for easy reading of the ladder and to aid in the monitoring of protein separation.

The NSR Prestained Protein Ladder is supplied ready to use in gel loading buffer.



Product Information

Range: 3.5-245 kDa (Tris-glycine-SDS running buffer).

Number of Bands: 13 Protein Bands.

Concentration: 0.1~0.4 mg/ml of each protein (set to give similar size bands for each protein).

Buffer: 20 mM Tris-phosphate, pH 7.5, 2% SDS, 0.2 mM Dithiothreitol, 3.6 M Urea, 15 % (v/v) Glycerol.

Storage Conditions: Store at 25°C, for 2 weeks or 4°C for 3 months. For long-term storage, store at -20°C.

The shelf life is 1 year from receipt when stored frozen, however the NSR Prestained Protein Ladder should be stable for many years if stored frozen and excessive freeze thaw cycles are avoided.

For research use only.



NSR Prestained Protein Ladder suggested protocol

1. Thaw the protein ladder at room temperature (or in your hand to speed up the process). Do not boil.
2. Mix thoroughly to ensure a homogeneous solution
3. Load an appropriate volume of ladder as below (thicker or larger gels may require greater volumes):

5 µl per well for mini-gels, 2.5 µl per well for blots

10 µl per well for large gels, 5 µl per well for blots

Gel Running Guide

Tris Glycine Gel							3-8% Tris Acetate	4-12% Bis Tris Gel	
6 %	8 %	10 %	12 %	14 %	16 %	4-20 %	TA	MOPS	MES
		245	245	245	245	245			240
	245	180	180	180	180	180		230	165
	180	135	135	135	135	135	235	170	125
	135	100	100	100	100	100	165	130	93
	100	75	75	75	75	75	120	93	72
245	100	63	48	35	25	245	100	70	57
180	75	48	35	25	20	180	70	53	42
135	63	35	25	20	17	135	55	41	31
100	48	25	20	17	11	100	45	30	24
75	35	20	17	11	5	75	30	22	18
63		17	11	5		63	27	18	15
						48	18	14	8
						35	15	9	3.5

This is intended as a general running guide to give suggested band separation only.

The apparent molecular weight of each protein has been determined by calibration with an unstained protein ladder in each of the below gel types.

Arrange for our Protein ladder to be in your stores and receive a free vial.

Email us for more details - tech@nktsscientific.com.